



## 1/48 North Road Brighton VIC

4 2 2

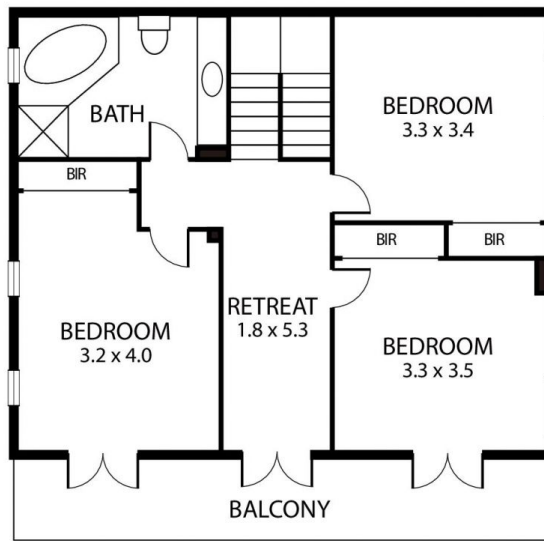
Located in prestigious tree lined street, close to shops, Gardenvale station, is this Executive Town Residence - Offering Downstairs formal lounge/dining, Main Bedroom with WIR and Ensuite. Spacious open plan kitchen/family/meals area with access to front courtyard. Laundry with access to garage.

**View :** <https://www.mooreco.com.au/lease/vic/bayside/brighton/residential/townhouse/7483863>

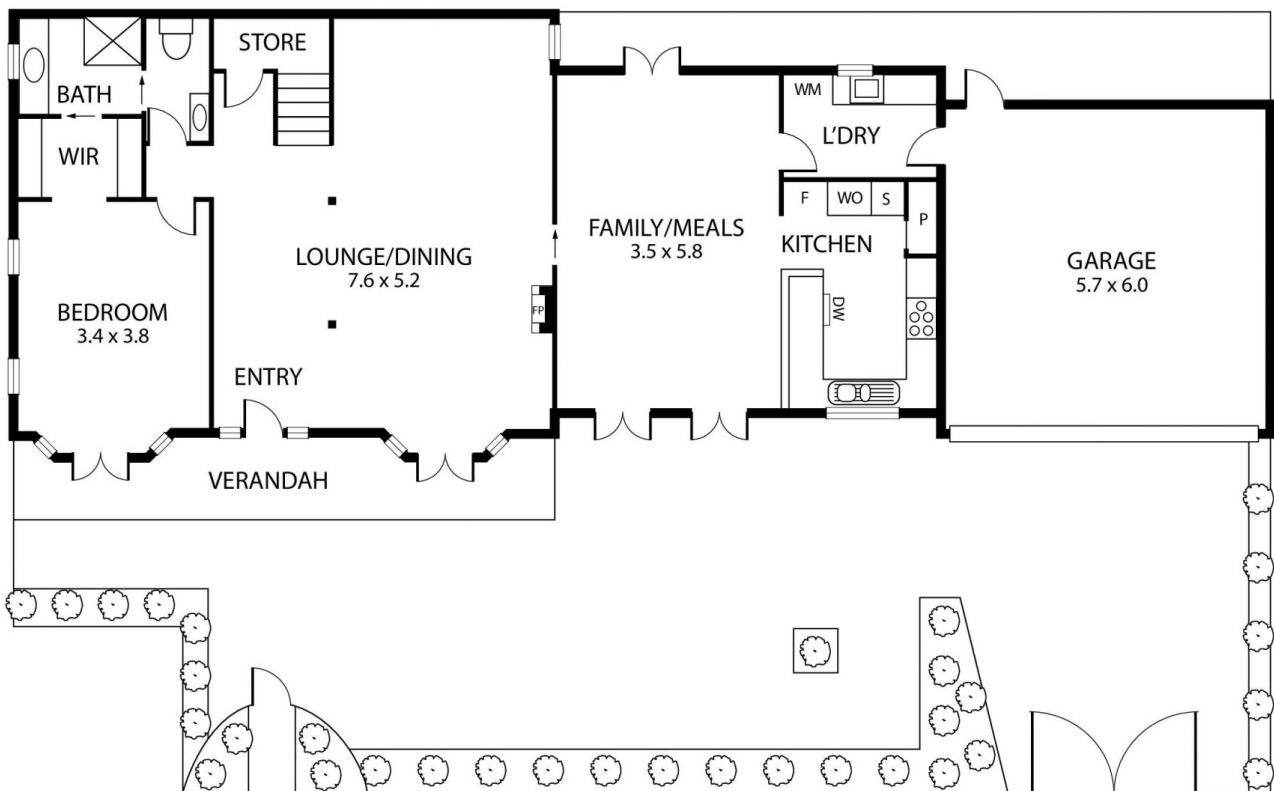
Upstairs 2nd, 3rd, 4th bedroom with BIRs, retreat area with direct access to balcony, separate bathroom with Spa Bath and separate shower.

Features: Double Remote LU Garage with direct access to residence, Remote front gates, Ducted Reverse Cycle Heating/Cooling. Large Paved north facing front courtyard garden.

1/48 NORTH ROAD, BRIGHTON



FIRST FLOOR



GROUND FLOOR