



## 39 Myrtle Street South Yarra VIC

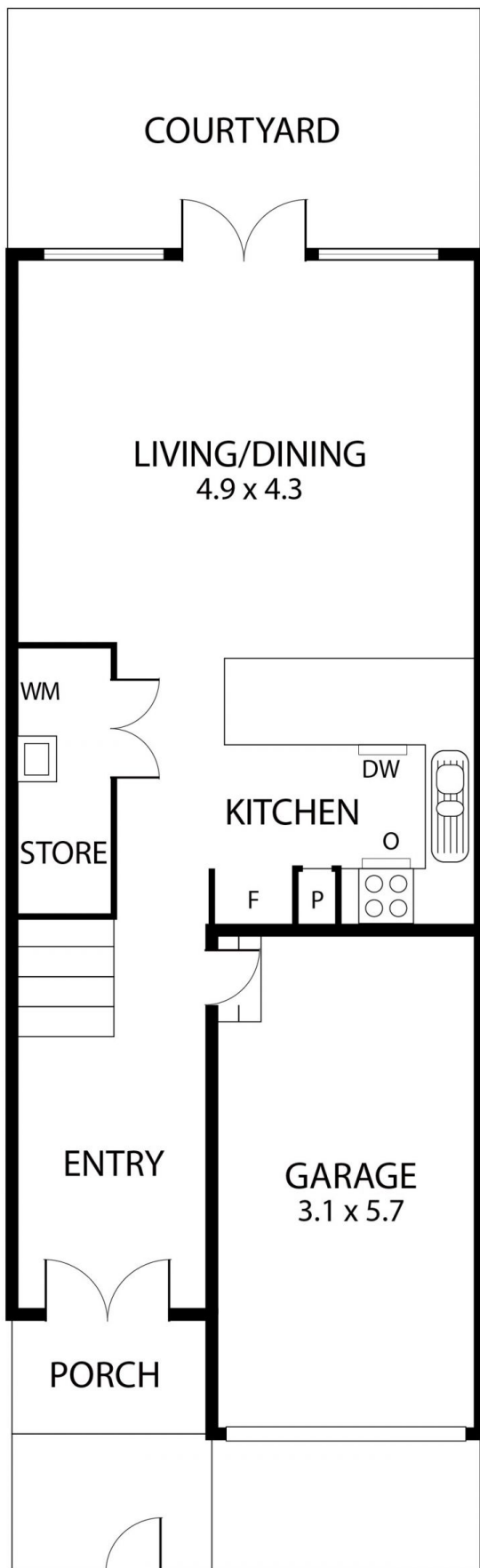
2 1 1

This spacious two-bedroom townhouse has everything you need, situated in the heart of South Yarra. Featuring a well-equipped kitchen with gas cooking, brand dishwasher and ample cupboard space which flows into the living/dining area with access to the private courtyard.

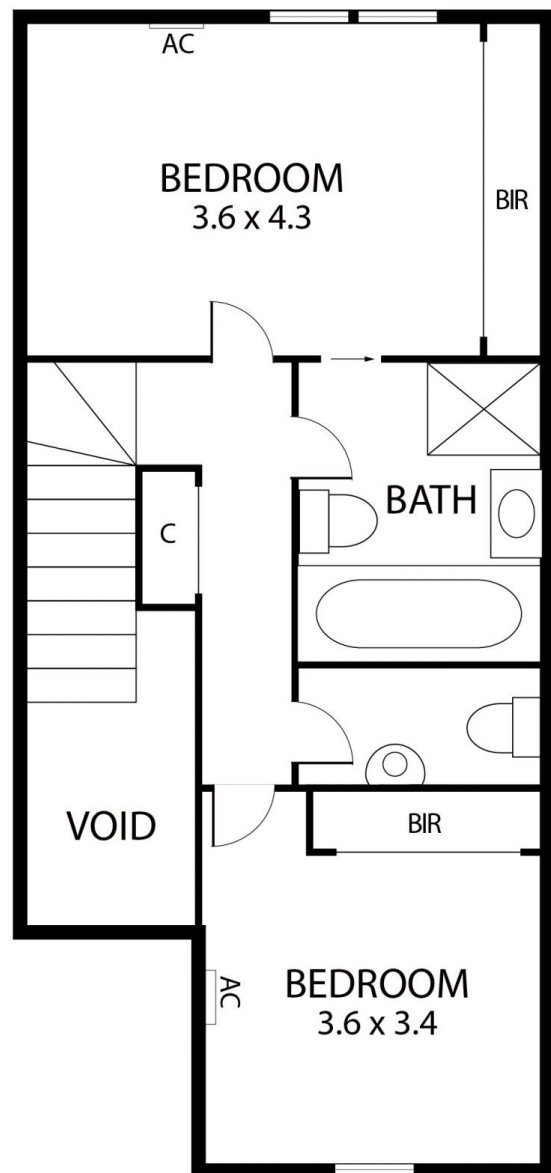
This versatile floorplan with a European style laundry extends upstairs to two bedrooms both with built in robes, two way central bathroom and separate powder room. Complete with secure lock up garage for one car and perfectly situated within walking distance to Toorak roads cafes and restaurants, tram/bus, South Yarra Station and Chapel St.

Additional features: Reverse Cycle Air Cons throughout.

**View :** <https://www.mooreco.com.au/lease/vic/inner-city/south-yarra/residential/townhouse/7612695>



GROUND FLOOR



FIRST FLOOR